

# AUTOCLAVE

## 12L and 21L



- 1 - Body
- 2 - Front door
- 3 - Manometer
- 4 - Command Panel
- 5 - Door Latch

### BASIC PRINCIPLES OF USE:

- Filling the autoclave with distilled water
- Heating: Steam followed by gradual increase of pressure.
- Sterilization: High temperature and pressure for approximately 16 minutes.
- Depressurization: Release of steam and pressure relief of the autoclave.
- Drying: Drying and cooling of the material to a temperature that allows its safe removal from the autoclave.



## AUTOCLAVE 12L

### FEATURES

- Stainless steel chamber: offering long durability and resistance.
- Heat insulated - internally: optimizing operation and reducing energy consumption.
- Sufficient space for sterilization of boxes and surgical packaging.
- Contains aluminium, perforated, removable trays (21L - three trays / 12L - two trays).
- Efficiency based on three factors:
  - saturated steam temperature
  - exposure time
  - lethally effective pressure for any micro-organism.
- Door sealing system made of high-performance silicone, resistant to temperature and pressure variations.
- Tray catch: avoiding direct contact of the operator.
- Manual filling of the chamber.
- Anti vacuum valve: preventing the door from locking.
- Safety seal: automatically activated when there is excess pressure.
- Control panel: with LEDs and buttons - indicating functions, and a manometer with pressure and temperature scales.
- Ergonomic handle: with a safety system for automatic depressurization, avoiding risks of accidents, in case of accidental opening.

### BENEFITS

- Sterilizes efficiently, quickly and safely.
- Enables total cleaning of the internal chamber, avoiding contamination and incrustations and increasing the useful life of the equipment.
- Does not require auxiliary furniture, since it is sized for use on top of sinks and cabinets.
- Ensures safe handling, as it avoids contact with hot parts, vapours, and the risk of electric shock.
- Electro-electronic devices offer protection against unexpected events.
- Easy identification in case of irregularities.
- It has a modern design and is user-friendly.

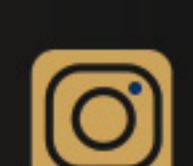


## AUTOCLAVE 21L

Illustrative photos. Dabi Atlante reserves the right to make changes in the design and technical specifications of products, with the authorization of ANVISA in order to pursue its improvement. Autoclave 12L: ANVISA 10069210082. Autoclave 21L: ANVISA 10069210079. 51000000141. Version May 2023



dabiatlante



dabiatlante\_oficial



dabiatlante

**DABI ATLANTE**