

INTRAORAL SCANNER

eagle.iOS

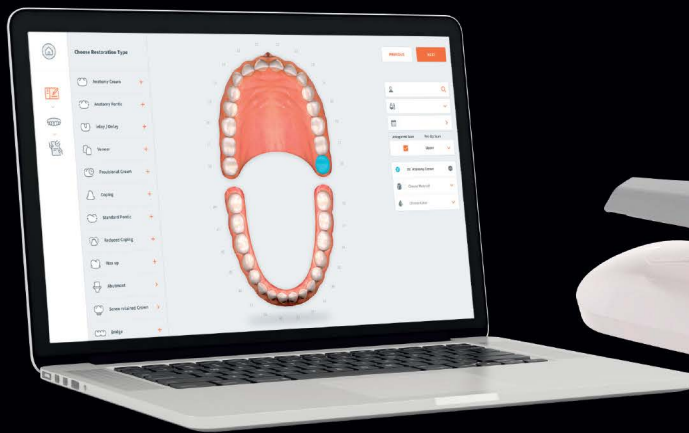


INTRAORAL SCANNER

eagle.IOS

The **Eagle IOS** is produced in Brazil and distributed throughout Latin and Central America, Asia, Africa, and Europe by Dabi Atlante. The technology used in **Eagle IOS** was developed by a Franco-American team is currently available in the world's major markets.

This technology is now at your fingertips, combined with the commitment and service excellence of Dabi Atlante.



**NO
RECALIBRATION
NEEDED**

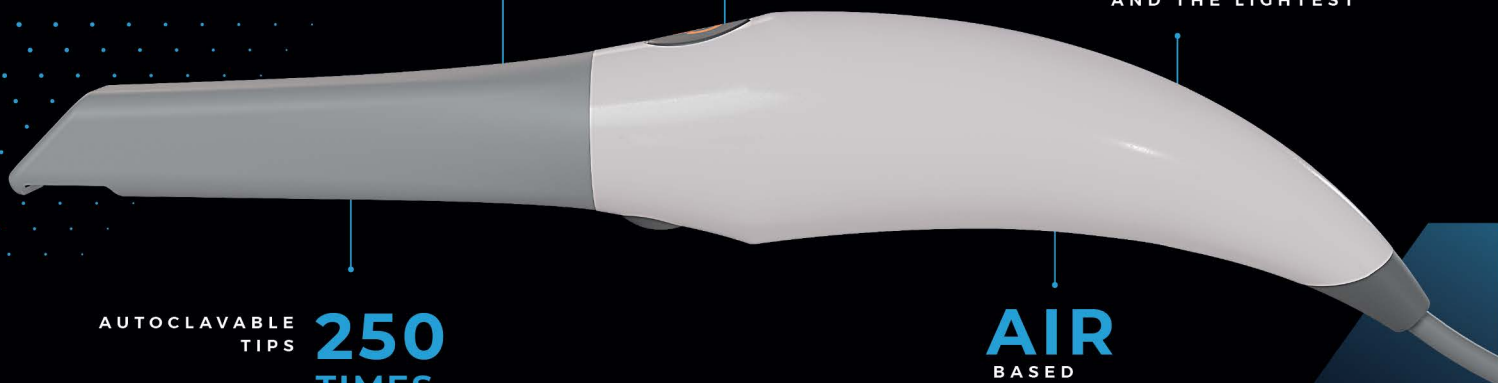
**360°
ROTATION**

FULL ARCH
SCAN IN
59
SECONDS

150g
SMALLER
AND THE LIGHTEST

AUTOCLAVABLE
TIPS **250**
TIMES

AIR
BASED
ANTI-FOG SYSTEM





A SCANNER WITH CUTTING-EDGE TECHNOLOGY AND AN ERGONOMIC DESIGN

The **Eagle IOS** is an ergonomic, portable intraoral scanner. Weighing only 150g, it is one of the lightest on the market. Its user-friendly interface adds simplicity, efficiency, and productivity to your workflow. With the **Eagle IOS**, you can perform accurate and agile scans for making study models, orthodontic aligners, prostheses, and myorelaxant plaques, among others.

The **Eagle IOS** does not need daily or weekly recalibration before use. The software license is free, can be installed on multiple computers, and its updates are automatic. It includes a feature that informs you of the quality of scans, which avoids reworks and promotes productivity. With just one click, your scan can be sent to the laboratory of your choice, via our cloud system.

EAGLE IOS INTRAORAL SCANNER SPECIFICATIONS	
SCANNER TYPE	Handheld scanner that creates optic Impressions for dental restorations
BASE DIMENSIONS	L x W x H: 306 mm x 98 mm x 72 mm
SCANNER DIMENSIONS	L x W x H: 256 mm x 43 mm x 43 mm
WEIGHT	150 g
CABLE LENGTH	2 m
SCANNER TIPS	Reusable and autoclavable - up to 250 times (Follow the guidance of the User Manual)
HEATING ELEMENT	Fan, preventing lens fogging
SENSOR TECHNOLOGY	CMOS
COLOUR	Yes, 24bits (8bits per channel)
SCANNING FREQUENCY	25-35 FPS (Frames Per Second)
FIELD OF VIEW	12 mm x 14 mm
ILLUMINATION	LED - HIGH POWER
ELETRICAL INPUT	5V DC, 100-240V AC, 50-60Hz

SCANNING PROCESS	
DENTAL PREPARATION	No need to use spray or powder
SCANNING PRINCIPLE	Continuous and accumulative scanning digitalization, with depth and colour data
TOOTH-SENSOR DISTANCE	0 - 20 mm
COMPUTER-SCANNER INTERFACE	USB 3.0 cable

SOFTWARE	
EAGLE IOS SOFTWARE LICENSE	Free with Eagle IOS scanner system, no annual fee
GENERATED ARCHIVES FORMAT	STL, PLY, OBJ
COMPATIBILITY WITH CAD/CAM SYSTEMS	STL, PLY & OBJ OPEN open architecture - compatible with most CAD systems

COMPUTER CONFIGURATION (MINIMUM REQUIREMENTS)	
CPU	Intel I7 - 4 Cores or superior
CPU CLOCK	2.8 GHZ or superior
RAM MEMORY	16 GB or superior (DDR4 or superior)
GPU	NVIDIA graphics processor GeForce GTX 10 Series: GTX1070 or superior, with at least 6 GB of video memory GeForce RTX 20 Series: RTX2060 or superior, with at least 6 GB of video memory
SSD	512 GB or more
USB PORT	At least 1 USB 3.0 port
OPERATING SYSTEM	Windows 10 Pro or superior

The logo for DABI ATLANTE features the brand name in a bold, italicized, white sans-serif font. Above the text, there are two horizontal white bars that overlap and curve downwards, creating a stylized, dynamic shape that suggests a wing or a modern architectural element.

DABI ATLANTE

dabiatlante.com.br

a member of the Alliage group

Contact: sales@alliage-international.com

alliage